



USER MANUAL



SUBLIM8

3-Way Self-Powered Full Range
Column Speaker System

TABLE OF CONTENTS

Overview	3
Quick Start Guide.....	4
Combining Speakers.....	5
Outboard Processing Warning.....	6
Setup Procedure.....	6
Operation & Controls	7
Indicator LEDs	8
How to Use the Presets	9
Pre-Installed Onboard Presets.....	10
Power Distribution.....	11
Troubleshooting	11
Specifications	12
Setup.....	14
Warranty.....	16
Safety Information	17
Important Notes	18
FCC Compliance Notice.....	18
Manufacturer.....	18

Overview

BASSBOSS isn't making a column loudspeaker.

The column loudspeaker is usually defined by a row of small speakers stacked up in the shape of a column, but the origin of the column was as an element of structure, something of substance that provided support and inspired confidence. Our column was conceived as just such a solid structure, to house a very powerful loudspeaker, with the capability to support big dreams, bold ambitions and wild festivities. The Sublim8 is a loudspeaker system in the form of a column. It is not a column loudspeaker. Here's how you can tell.

The Sublim8 is built from Birch plywood and uses premium quality components that can actually do the duty they are called upon to do. The design of the system provides the column speaker aesthetic and ease of use without leaving you with a column of compromises.

The Sublim8 is a 3-way active system. The subwoofer section features an 18", long-excursion, high-powered, 4" voice coil Neodymium motor driver in a Birch cabinet, which also houses the 3-channel amplifier and the DSP. One of the amp channels drives the subwoofer, while the other two power the mid-bass and high-frequency drivers respectively. There are two 8" mid-bass drivers in the top section, and between those two woofers is a something you won't see in any other column, a 3" voice coil, 1.4" throat high-frequency compression driver mounted to an isophasic waveguide. This configuration clearly differentiates the Sublim8 from column loudspeaker systems that rely on many small drivers to take care of upper end of the audible range.

The thoughtful design and impressive structure of the Sublim8 dramatically increases the size of the crowds that can be covered. When the front row doesn't block the sound from getting to the back of the venue, that's because the Sublim8 places its mid and high frequency drivers above the heads of the audience so everyone can hear clearly. When the sound projected to the back row maintains every detail, that's because of the equal spacing between the HF horn and each of the mid-bass drivers. When the people off to the sides can hear as well as those out front, that's because the exit from the dedicated HF waveguide is only 1" wide so it doesn't narrow the spread of high-frequency waves. There are many more ways that the Sublim8 design maximizes the potential of the column structure without falling victim to the common column compromises.

Setting up the Sublim8 is so much easier than you're expecting. You won't need a crew to lift big, heavy loudspeakers in order to deliver a big, heavy sound. The whole setup process can be completed by one person. First, the transport cart is included, so the subwoofer unit as well as the mid and high sections roll in on it together. After removing the two top sections, there's no need to lift the subwoofer from the cart because it tilts off the cart. The sub is then tilted onto its side. The dolly serves to support and align the mid and high sections with the sub, allowing them to link together while still horizontal. Finally, the complete assembly provides huge leverage that makes it easy to raise the system to its full 9-foot height.

To keep things as light and as convenient as possible, the middle section of the column is hollow and open at the back, allowing cables and other accessories to be stored within the unit itself. No hardware is needed to secure the Sublim8; the included NL-4 connecting cable prevents the middle and top sections from sliding apart while the unit is in use.

To top it all off, this structural column is actually designed for light fixtures to be mounted to its top, and even includes a power outlet for a light! You may not need that truss tower any more!

If you need to take it to the extremes, the driver cones are waterproof, the grilles are backed with hydrophobic cloth and the power connectors are IP65-rated.

Quick Start Guide

1 Ensure the ground on which you're setting up is level and that the cabinet will be secure and stable. Place the subwoofer in the desired location, ensure it's stable there, and then tilt it onto its side, leaving at least 6 feet clear beyond the top of the sub.

2 Place the spacer on its back on the cart and then link the mid-high section to the spacer by lowering the groove in the bottom over the tongue on the spacer.

3 Rotate the two assembled pieces onto one side and connect the cables into the mid-high section.

4 With the spacer toward the sub, roll the assembly to the sub and insert the foot into the shoe on the top of the sub. Once inserted, push the shoe forward to expose the two connectors. Plug the cables in the spacer into the connectors on the sub.

5 Lift the top section off the cart, move the cart aside and continue to lift the top until vertical.

6 Connect the XLR signal input cable and the power cord to the back of the subwoofer. Once powered on, select the desired preset and adjust the level.

Combining Speakers

BASSBOSS systems are easy to set up quickly. The best possible results are achieved consistently because of the integrated nature of the designs. All BASSBOSS loudspeakers are complete, integrated systems, featuring the cabinet, transducer, amplifier and a comprehensive suite of processing. Setup is particularly easy because the products integrate with each other.

Provided the cabinets are physically aligned, any BASSBOSS sub can be combined with any BASSBOSS top and their outputs will be phase-coherent. This means no cancellations and no gaps in the response at the crossover frequency, regardless of which preset is selected.

The on-board BASSBOSS processing allows for the following: Any BASSBOSS powered subwoofer can be combined with any other BASSBOSS Powered subwoofer and their outputs will sum coherently. (i.e. in phase with each other.)

Any BASSBOSS powered subwoofer or combination of BASSBOSS powered subwoofers can be combined with any BASSBOSS powered top and their outputs will sum coherently through the crossover region.

HOWEVER only one model of top should be used at a time. An assortment of different tops cannot be stacked together and still achieve coherence and clarity. Putting tops of similar or different models not designed for side-array usage next to one another creates comb-filtering and significantly degrades sound quality.

The following tops should be used individually, i.e. should NOT be arrayed

Krakatoa

(Axial Point Source Full-Range)

Sublim8

(Free-standing full-range tower)

AT312

(Co-axial point-source top)

DiaMon

(Co-axial point-source satellite)

SV9

(2-way monitor with Satellite mode)

The following tops can be used in arrays

MFLA

(Medium Format Line Array, up to 20 cabinets can be arrayed)

AT212

(Horizontally arrayable when necessary)

DV12

(Arrayable in PAIRS ONLY with the upper box of the pair inverted.)

Outboard Processing Warning

Third-party outboard processing (Drive Racks, etc.) are not recommended and are not necessary with BASSBOSS MK3 series powered loudspeakers. Outboard processing will not improve, and will very likely degrade the sound quality, reliability and output capacity. Using external processing inappropriately can cause driver damage that is not covered by warranty.

The internal processing can accomplish everything an external processor could accomplish without degrading the sound quality and without putting components at risk. Before considering using an outboard processor, contact BASSBOSS customer service with your use-case scenario for assistance in setting up the internal processing to achieve your goals.

Check out the Knowledge BASS at help.bassboss.com for more information on external processing.

Setup Procedure

Once the cabinet is in the desired location, balanced signal cables should be connected via the XLR-F input. It's highly recommended to run balanced signal cables to minimize the chance of noise and ground-loop hum. **The incoming signal should be unprocessed because all the necessary processing is done in the built-in DSP.** The signal should be run directly from the outputs of a mixer or controller.

The XLR-M connector provides a full-range, unprocessed, pass-through connection to additional cabinets. This output can be connected to additional subs or tops. Up to 12 cabinets can be connected on a single output from a mixer or controller.

Connecting the mains power The power connector is a Neutrik PowerCON TOP waterproof type. The power connector inserts with the silver tab rotated counter clockwise from vertical, at about the 1000 position and once inserted rotates clockwise to the 1200 position to lock in place. Once locked, this connector is waterproof.

This connector also serves as the power switch. To disconnect and remove the connector, pull back on the silver tab to unlock it and rotate it counter clockwise. Once rotated to the insertion angle, the connector can be removed.

When connecting and disconnecting, no force should need to be applied. If the connector doesn't insert and rotate smoothly, either it's in the wrong position or it's damaged and should be replaced.

Always use a grounded outlet. The supplied power cord includes a standard grounding NEMA 5-15 (Edison) 120-Volt US wall plug. **In unfamiliar locations it's recommended to verify the correct wiring of outlets before powering your system.**

It's highly recommended to connect all signal and power cords to the speakers before plugging the power cords into mains outlets. When your speaker is powered on, you'll see all the indicator lights turn on and then show the system's current status.

Operation & Controls

There are 2 controls on the amplifier.

1 Input

Functioning as a "volume" control, this knob allows adjustment of the input sensitivity of the loudspeaker. -0dB indicates maximum sensitivity (loudest). -72dB is minimum sensitivity (essentially off). To avoid clipping the inputs, the maximum incoming signal should not exceed +22dB.

While the amplifier has built-in limiters and safety features to protect itself and the speaker, it can't protect the speaker from distorted incoming signals. The amplifier will simply amplify the clipped signal, which can do the same damage as clipping an amplifier. Since it's essentially impossible for these amplifiers to clip, signal-level clipping is the most common cause of damage to the speaker.

2 Preset Select

Pressing the Preset Select button cycles through presets 1-8, and pressing it again after preset 8 returns to preset 1.

Each preset includes all necessary low-pass and high-pass filters at the selected frequencies and all the necessary alignments to maintain phase coherence in the crossover range when used with other BASSBOSS powered speakers.

Presets help you fine-tune the balance between the subwoofers and top speakers. More details on the different combinations are on page 9.

If you hear distortion, lower the input level right away. While rare, distortion can happen, and if the signal is clean this indicates the driver has reached its physical capabilities.

Indicator LEDs

Indicator LEDs – Left side, bottom to top

Ready Power is on and the system is ready to play.

Signal Input signal is present.

-12dB 12dB of headroom remaining before reaching maximum output.

-6dB 6dB of headroom remaining before reaching maximum output.

Limiting A channel is reducing the incoming signal level to prevent overdrive.

Overheat The amplifier is reducing output to prevent shut-down from overheating.

Protect The amplifier is shut down due to a condition that could cause damage.

The Protect LED also is engaged when the system has been muted via the software.

Comm Link Indicates communication is active on the LAN connection(s).

Indicator LEDs, Right Side, Bottom to top

Presets 1-8

The illuminated LED indicates the corresponding preset is loaded.

How to Use the Presets



The Sublim8 is a powerful full-range column system that easily assembles. Because the Sublim8 features a single 18" woofer for low frequencies, the maximum output of the system is limited by the demand for low frequencies, so additional subwoofers can be used to supplement the mid-high capabilities of the Sublim8. The ? and ? are the most appropriate to use to enhance the low-frequency output of the Sublim8.

The Sublim8 can be used in full-range to add its low-frequency output to the subwoofers, or, when additional subwoofers are added to provide enough low-frequency energy, higher SPL may be desired from the upper bass section of the Sublim8. To achieve this, there are presets with high-pass filters that reduce the demand for LF from the Sublim8, allowing it to deliver more SPL without limiting the low-frequency levels.

All the presets in the Sublim8 are compatible with all the presets in the Kraken, Makara, ZV28, VS21 and all the other subs in the BASSBOSS line.

When the subwoofer levels are to be run higher than tops levels, (which is almost always) the effective crossover moves higher in frequency. If you intend to run your system "bass-heavy" it's recommended to run lower-numbered presets on the subs and higher-numbered presets on the tops to avoid an excessively "boomy" sound.

Selecting low-numbered presets on subs with high-numbered presets on tops may result in a lack of "punch" in certain combinations. This is most likely when not enough level is available from the subwoofer(s).

When not enough output is available from the sub(s), using a preset combination with overlap can help provide a little more bass level but it does limit the maximum level of the tops due to the added demand for low-frequencies from the tops.

It's recommended that you try several, if not all, combinations when first setting up to determine which combination works best in each environment. You will likely choose different combinations for wood floors, concrete floors and outdoors.

Experiment with different combinations to dial in your preferred combination in different environments.

Pre-Installed Onboard Presets

High-pass filters with included phase compensation.

Preset 1	32Hz high-pass filter
Preset 2	34Hz high-pass filter
Preset 3	36Hz high-pass filter
Preset 4	36Hz high-pass filter
Preset 5	38Hz high-pass filter
Preset 6	40Hz high-pass filter
Preset 7	40Hz high-pass filter
Preset 8	Preset 8 Maximum SPL 42Hz high-pass filter

Presets 1-8 provide 8 steps between maximum low frequency extension (Preset 1) and maximum SPL (Preset 8). Higher-numbered presets are recommended for pairing the Sublim8 with additional BASSBOSS subs.

Preset 1: Heavy Bass Mode: 32Hz and up. Deep, dark, dangerous

Preset 2: Still heavy, 34Hz and up, less dark and dangerous

Preset 3: Just on the heavy side, 36Hz and up

Preset 4: Same bottom, more top. 36Hz and up, brighter balance

Preset 5: Smooth and even. 38Hz and up

Preset 6: More flat than fat, 40Hz and up, more loud for the crowd

Preset 7: Big and bright. 40Hz and up, letting the highs shine

Preset 8: Big crowd, get loud! Top on top. 42Hz and up.

If you have more subs, this is where you'll need them

All presets are compatible with all BASSBOSS subwoofer models and other presets.

Additional presets are accessible through software.

See "How to Use the Presets" section for more information

IMPORTANT - Update NOW!

ControlBASS + Settings

For improved performance and stability, update your settings immediately after opening your new gear!

Major new updates are available.

The most up-to-date information on presets can be found here:
bassboss.com/sublim8presets

We recommend listening to each preset and choosing the one that sounds best for your application.

Download new settings updates and the ControlBASS app at
bassboss.com/software

Instructions on using the software, linking to your computer for remote monitoring and control and updating the settings files will be provided when you sign up!

Register your gear
bassboss.com/support

For more information and setup tips on how to get the best and most out of your system check out the Knowledge BASS
help.bassboss.com

Power Distribution

Connect no more than two Sublim8s to a single 15A 120V outlet. The amplifiers can operate on mains supply from 100 to 250VAC. To connect to voltages other than 120V, a different mains connector plug must be used. Contact your salesperson for information about purchasing cables for alternate voltages. Do not connect equipment that will draw more than the 15A on a single power outlet. Use separate circuits whenever possible to help prevent overloading a single circuit and tripping a breaker.

Although amplifiers for tops and subs may be specified to have the same power capacity, amplifiers used for tops applications tend to draw significantly less current. Subwoofers draw far more current than tops due to the demands for level and the duration of the notes.

The amplifiers can operate on mains supply from 100 to 250VAC. To connect to voltages other than 120V, a different mains connector plug must be used. Contact your salesperson for information about purchasing cables for alternate voltages.

Pass-through Power connections can be used to power additional cabinets. With optional True 1 TOP cables, power can be linked between subs and tops. The included pass-through power connector can be used to power additional cabinets or a lighting fixture. A power output port is included at the top of the unit for easily connecting a lighting fixture. When using a lighting fixture, look at the specifications so the total current does not exceed the amperage rating for the circuit you are connecting to.

Avoid powering all subwoofers on the same circuit. Instead, use separate circuits for each subwoofer and top speaker combo to help prevent overloading a single circuit and tripping a breaker.

Troubleshooting

If, after following the previous instructions for setup, you have no output from the loudspeaker

Verify that the green Ready LED is lit. If NOT lit, check the following

1. Is the power cord plugged into a live outlet?
2. Is the Neutrik powerCON connector rotated into the locked position?

If the green Ready LED is lit, check the following

1. Is the red Protect LED illuminated? The unit may be in protect mode or set into mute via software.
2. Is the signal cable connected to the input?
3. Is the signal cable connected to an operating output at the other end?
4. Is there signal flowing to the input? Check the integrity of the cable against a different cable.
5. Is the volume knob turned all the way down or at a very low level?
6. Is the signal flowing to the input full-range?

Filters in the signal may remove the operating frequencies of the loudspeaker receiving them.

7. If you're connected via LAN, check the level and filter settings in the software.

Specifications

Acoustical

Loudspeaker Description	Self-powered, 3-Way Active Full Range Loudspeaker Column
Frequency Response (± 3 dB)	35Hz - 19,000Hz
Maximum Measured SPL	130 dB (half-space)
Max calculated SPL (Peak)	133 dB (half-space)
Nominal Dispersion (H° x V°)	120 x 20

Electrical

Amplification	4000W Class D (2400W LF + 800W MF + 800W HF)
Processing	Integrated comprehensive DSP. 96kHz sampling rate with 8 pushbutton presets. All presets include high pass filters, low pass filters, phase alignment, equalization and multi-stage limiting. Storage capacity for up to 100 presets
Electrical Input Connector, Amp	Neutrik powerCON True 1 TOP IP65 rated waterproof connectors
Electrical Connector, Mains	USA 3-pin grounding 120V electrical plug: NEMA 5-15; Outside USA alternate connectors provided
Voltage Operating Range	100-240V AC, 50-60Hz (Auto-sensing, auto switching universal supply)
Current Draw, Nominal	5.4A @ 120V (nominal), 2.5A @ 240V (nominal)
Display	LEDs for Power on/ready, Signal, -12dB, -6dB, Limiter Active, Thermal, Protect and LAN Link Active. Eight LEDs indicating selected preset
Signal Input Connector	XLR-F
Signal Output Connector	XLR-M (Direct pass-through, unprocessed)
LAN Connectors	EtherCON RJ45 (x2) with 2-port Ethernet switch

Physical

Enclosure Type	3-Way Full-Range Loudspeaker System. Vented direct radiator subwoofer cabinet, vented direct radiator mid-bass cabinet with Isophasic waveguide loaded High Frequency section and an interlocking spacer.
Transducer LF	1 x 18 in. diameter (450mm) neodymium motor woofer with 4 in. (100mm) voice coil, waterproof cone
Transducer MHF	2 x 8" diameter (210mm) neodymium motor woofers with dual 2" (51mm) voice coils and waterproof cones
Transducers, HF	1 x 3 in. (76mm) diameter diaphragm compression driver with 1.4" (35mm) exit mounted to isophasic wave guide
Cabinet Construction	CNC machined 15 and 18mm Birch plywood with extensive bracing and dado joinery. 3 interlocking sections: sub, spacer and top. 6 handles (2 per section).
Suspension Points	None. Attachment to secure a light fixture is provided in the top section.
Dimensions (Transport)	34" x 37" x 25.75" (86.36 x 93.98 x 65.41 cm)
Dimensions (Assembled)	106" x 19.75" x 24"
Dimensions (Top)	36" x 8.5" x 11.25" (91.44x 21.59 x28.58 cm)
Dimensions (Sub)	36" x 19.75" x 24" (91.44 x 50.17 x 60.96 cm)
Dimensions (Spacer)	36" x 8.5" x 11.25" (91.44x 21.59 x28.58 cm)
Net Weight	200 lbs (90.7 kg) Spacer: 22 lbs Top: 39 lbs Sub: 100 lbs (10 x 17.6 x 45.45 kg)
Shipping Weight	230 lbs (104 kg)
Exterior Finish	High-pressure, bonded polyurea coating. Rugged, waterproof. Black or white
Grilles	Perforated, powder-coated steel with hydrophobic backing
What's Included	Subwoofer Cabinet, Mid-high cabinet, Spacer cabinet, Pass-through speaker interconnect cable, pass-through power cable, (for lighting) Transport Dolly Cart with 4 locking 4" casters, Subwoofer Cover, Mid-high cover, Spacer Cover, 15-foot (5m) Power Cord, Owner's Manual, Warranty Registration Card

Included

Dolly	Birch plywood flat cart with 4 locking wheels
Hardware	M6 shoulder eye bolts. (2)

Our proactive philosophy causes specifications to be subject to change whenever improvements are made.

The Sublim8 is easy to set up.

Video instructions: bassboss.com/sublim8setup

1. Remove the top speaker and spacer section from their position on the top of the sub.
2. Tilt sub off the cart by lifting the cart from the end with the stoppers (the bottom of the sub should face the open end of the cart).
3. Remove all the covers and remove the power cord and other accessories from the interior of the spacer.
4. Ensure the ground or floor where the Sublim8 will be set up is level and that the cabinet will be secure and stable.
5. Position the subwoofer in the intended location for use. Re-check that the ground or floor is stable and level.
6. Tilt the sub over onto its side, positioning it horizontally. Leave enough room for the upper sections to be positioned in alignment with the top of the sub. The subwoofer will be facing the direction of the audience, but lying down.
7. Tilt or place the top section onto the cart, with its foot towards the sub and with its front facing in the same direction as the sub's front. Leave the top 1/3 of the speaker extending past the end of the cart.
8. Rotate the top onto its back and align the side with the edge of the stopper on the end of the cart.
9. To add the spacer section, lower the slot in the end of the spacer over the tongue of the top section, keeping the spacer aligned until the back of the spacer is resting on the cart and both grilles are flush.
10. Rotate the assembly back onto its side, once again facing the same direction as the sub.
11. Connect the pass through cables in the spacer to the inputs in the top section. This locks the two sections together.
12. Insert the spacer's foot straight into the shoe in the top of the sub. The cart holds the upper section at the correct height to simply roll the assembled pair to the end of the sub and insert the foot into the shoe.
13. Pull the upper section's foot forward so that the toe slides all the way forward, exposing the connections in the top of the sub.
14. Connect the pass-through cables from the spacer section to the outputs on the subwoofer.

Be sure the interconnect cables are connected before moving to the next step.

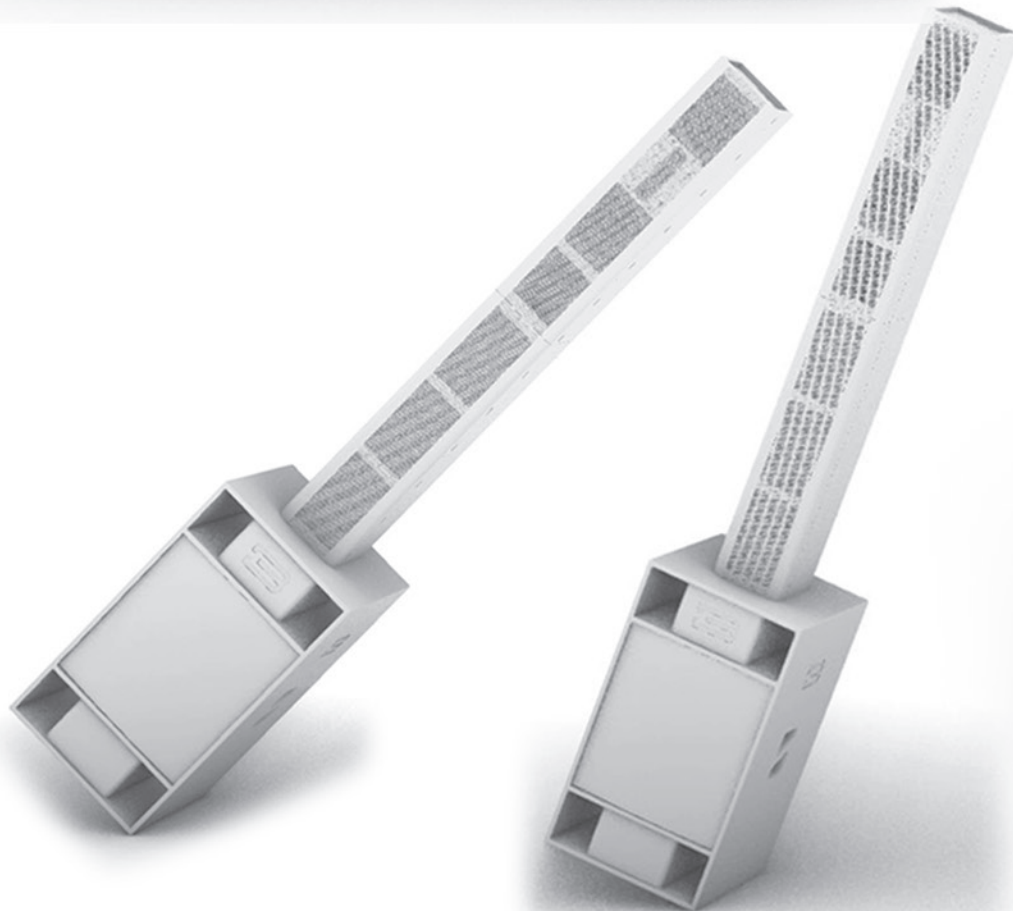
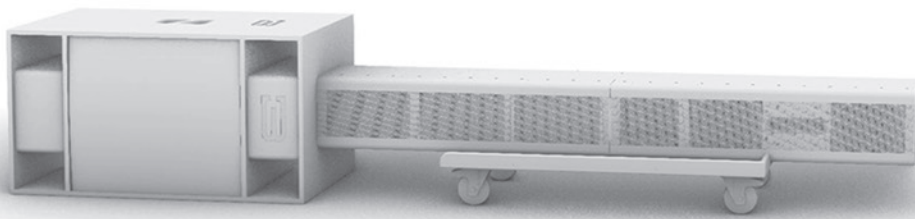
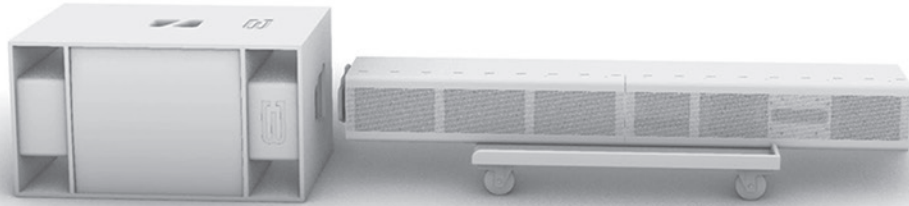
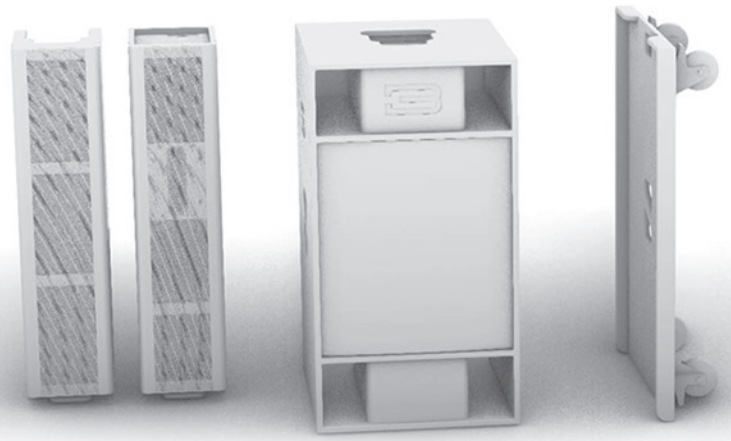
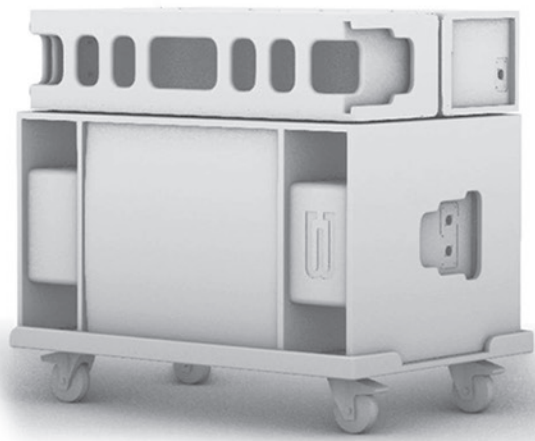
The interconnect cables ensure that the parts can't separate.

You now have a subwoofer at the end of a long lever. This can be used to tip up the Sublim8 to performance position.

*If you're setting up on a slippery surface, such as a waxed floor, ensure that the subwoofer won't slide away from you. Use a hard rubber mat or carpet tile if necessary.

*If you plan to attach a light fixture, do that before standing the tower up.

15. Starting from the top section, the far end of the lever, lift the top end of the tower up and move the cart out of the way. Continue to lift and tilt the tower until it's fully vertical.
16. Connect the signal and power cords to the back of the sub.
17. Play music and select your preferred preset. You're ready to enjoy the Sublim8.



Warranty

WARRANTY INFORMATION | Our fully-transferable warranty covers all BASSBOSS products.

STANDARD CABINET WARRANTY

BASSBOSS loudspeaker cabinet integrity, including all joinery, fasteners, handles and wood, is warranted against defects in materials and workmanship for a period of six (6) years from the date of purchase. This warranty does not cover items that are intended to wear and can be replaced if worn or damaged. Examples of items not covered by this warranty are cabinet feet, grilles and the finish or coating applied to the cabinet.

ENHANCED COMPONENT WARRANTY

BASSBOSS amplifiers and electronic components are covered against failures due to defects in materials and/or workmanship for a period of three (3) years from the date of purchase.

TRANSDUCER WARRANTY

Transducers are covered against failures due to defects in materials and/or workmanship for two (2) years from the date of purchase.

WARRANTY SUPPORT

Warranty support is a service, and part of that service includes helping you prevent failures and minimize repair and shipping costs. Please contact BASSBOSS immediately if you observe an issue.

Please do not ship products without obtaining a return authorization number (RMA) by contacting BASSBOSS at bassboss.com/support. **If you need to ship your speaker for service, BASSBOSS technicians will provide assistance on shipping and packaging requirements specific to your service needs.**

WARRANTY LIMITATIONS

During the warranty period, if your loudspeaker malfunctions or fails due to any defect in components or manufacturing, the failed parts will be repaired or replaced. This warranty does not extend to damage resulting from improper installation, misuse, neglect or abuse. Warranty coverage and eligibility will be determined upon inspection by BASSBOSS personnel. This warranty does not cover labor other than that authorized and performed by BASSBOSS personnel. Service will be performed upon the return of the failed unit, together with its original sales receipt or other proof of purchase, to BASSBOSS or an Authorized Service Facility. Purchaser is responsible for all costs of shipping and handling. Cosmetic damage is specifically excluded from this warranty. This warranty is rendered void if service, repairs and/or modifications are attempted or made by anyone not specifically authorized by BASSBOSS to perform said services. ***Please contact BASSBOSS or your local BASSBOSS dealer before attempting any repairs and before shipping parts in for service.*** This warranty gives you specific legal rights, and you may also have other rights, which vary from state to state.

Safety Information

Important information regarding safety and the use of your loudspeakers

To prevent potentially dangerous exposure to high levels of acoustic pressure never stand in the immediate vicinity of loudspeakers driven at a high level without hearing protection. Professional loudspeaker systems are capable of causing sound pressure levels detrimental to human health. When a transducer capable of producing high sound levels is being used it is necessary to wear ear plugs or protective earphones to prevent hearing damage.

Even seemingly non-critical sound levels (from approximately 95 dB SPL) can cause hearing damage if people are exposed to it over a long period. Anyone exposed to these levels should use appropriate hearing protection devices. System and venue owners and operators are encouraged to make hearing protection devices available to all customers and staff members.

Warning:

In order to prevent accidents when setting up the loudspeakers or loudspeaker stands, make sure they are standing on a firm surface. Ensure that all hardware, fixings and fasteners used for installation or mobile deployment are of an appropriate size and load safety factor. Use only the factory installed, internally secured M10 fly points when suspending cabinets above the ground. Use only appropriately load-rated hardware. When suspending cabinets from their fly-points, use at least 4 (four) of the fly points on the cabinet and always attach to multiple points of the supporting structure. Pay attention to these instructions and follow the relevant safety guidelines in your area. Always use hardware that is approved for overhead lifting.

Check the security/tightness of all load-bearing fasteners regularly. Check all hardware for visible signs of wear and tear. Replace them when necessary. Not all models include these fly points. If your cabinet does not include these fly-points, it is not intended to be flown. Never hang loudspeakers from handles. Never drill or screw into cabinets to attach lifting points.

Only use included, factory installed, internally secured M10 fly points when supporting cabinets. (Not all models include these fly points.) Only use appropriately load-rated hardware. Never hang loudspeakers from handles. Never drill or screw into cabinets to attach lifting points.

Pay attention to the manufacturers' instructions and to the relevant safety guidelines. Regularly check the loudspeaker housings and accessories for visible signs of wear and tear, and replace them when necessary. Regularly check all load bearing bolts in the mounting devices.

Caution Loudspeakers produce a static magnetic field even if they are not connected or are not in use. Therefore make sure when erecting and transporting loudspeakers that they are nowhere near equipment and objects which may be impaired or damaged by an external magnetic field. A distance of 3 feet (1m) should be maintained between loudspeakers and sensitive equipment such as CRT monitors or magnetic storage media.

Never attempt to carry out any operations, modifications or repairs that are not expressly described in this manual. Contact your dealer or BASSBOSS support if the product is not functioning properly.

The audio system must comply with current local standards and regulations regarding electrical systems. For installation purposes, BASSBOSS strongly recommends that this product be installed by a qualified, professional installer who can ensure correct installation and certify that it is installed in compliance with the regulations in force.

The audio system must comply with current local standards and regulations regarding electrical systems.

Important Notes

Shielded data cables must be used.

To minimize the occurrence of noise and interference, always use shielded signal cables. Avoid routing signal or data cables close to equipment that produces high-intensity electromagnetic fields such as transformers, power cables and loudspeaker wires.

Do not coil excess power cable. Do not coil or wrap power cables and signal or data cables together.



WARNING

This is a class A product. In a domestic environment, this product may cause radio interferences, in which case the user may be required to take corrective measures.

FCC Compliance Notice

Note This equipment has been tested and found to comply with the limits for a Class A digital device, pursuant to part 15 of the FCC Rules. These limits are designed to provide reasonable protection against harmful interference when the equipment is operated in a commercial environment.

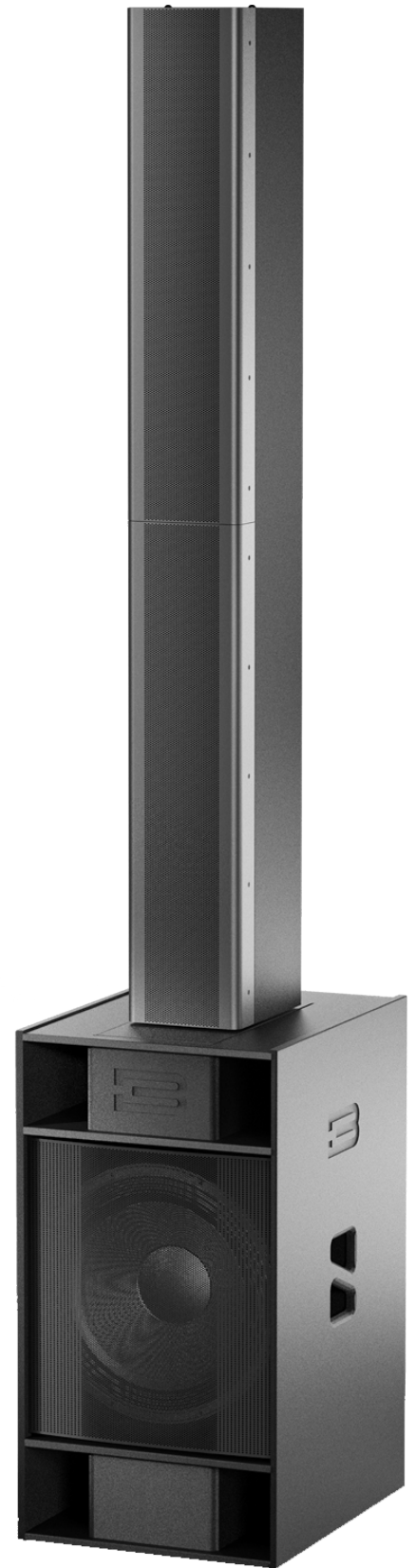
This equipment generates, uses and can radiate radio frequency energy and, if not installed and used in accordance with the instruction manual, may cause harmful interference to radio communications. Operation of this equipment in a residential area is likely to cause harmful interference in which case the user will be required to correct the interference at their own expense.

Manufacturer

True Lee Loudspeakers | BASSBOSS 2028 E Ben White Blvd. #240-8220 Austin TX 78741

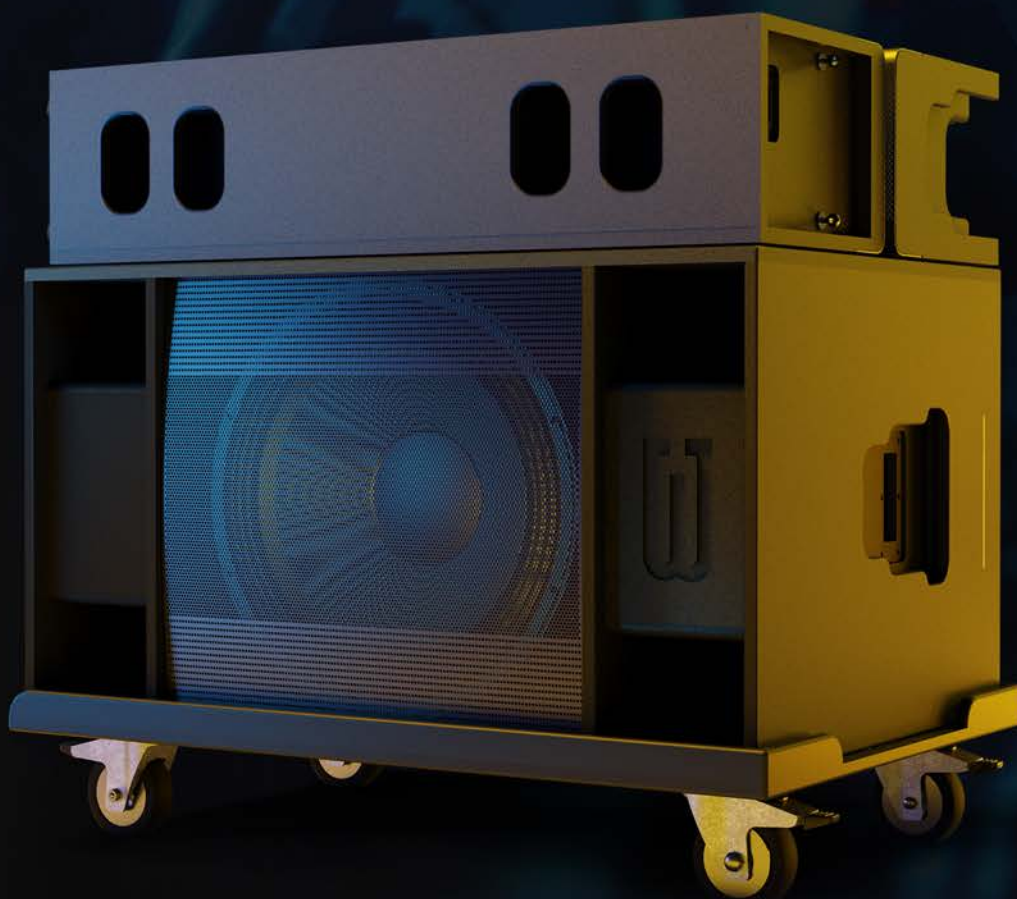
We declare, under our sole responsibility, that to the best of our knowledge to which this declaration relates, our products are in conformity with the applicable requirements.

Product	Sublim8 Powered Column Loudspeaker
Intended use	Professional Audio Loudspeaker



SUBLIM8

3-Way Self-Powered Full Range
Column Speaker System



Need more assistance?
We're here to help.

help.bassboss.com